



MONTHLY MEMBERSHIP PROGRESS REPORT

District 31 O

Results as of: 5/31/2017

GMT: HARVEY WHITLEY

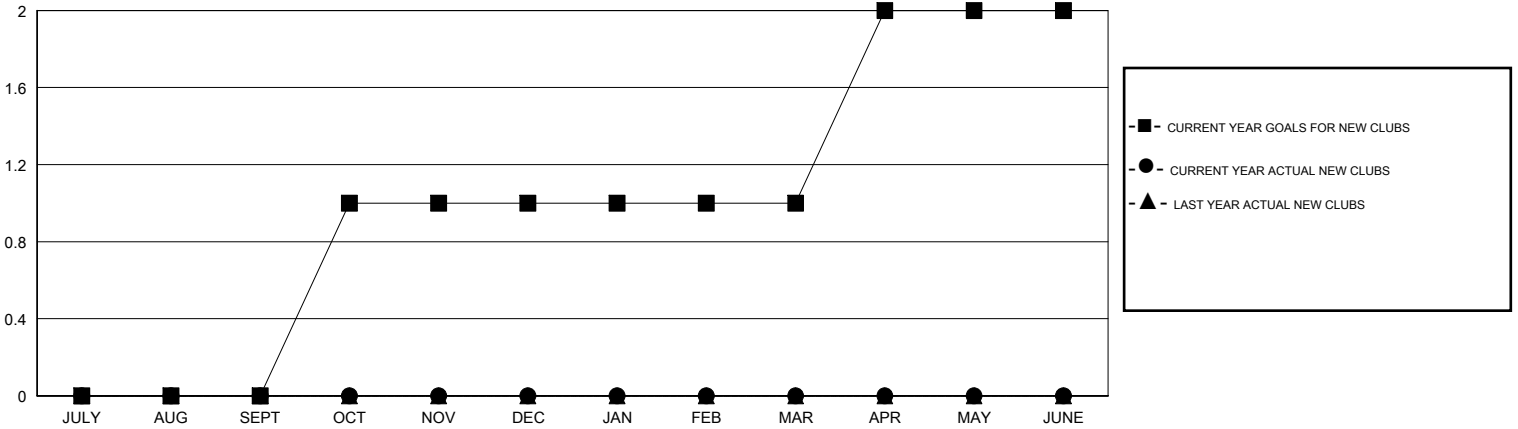
LOCATION NORTH CAROLINA

GMT CA

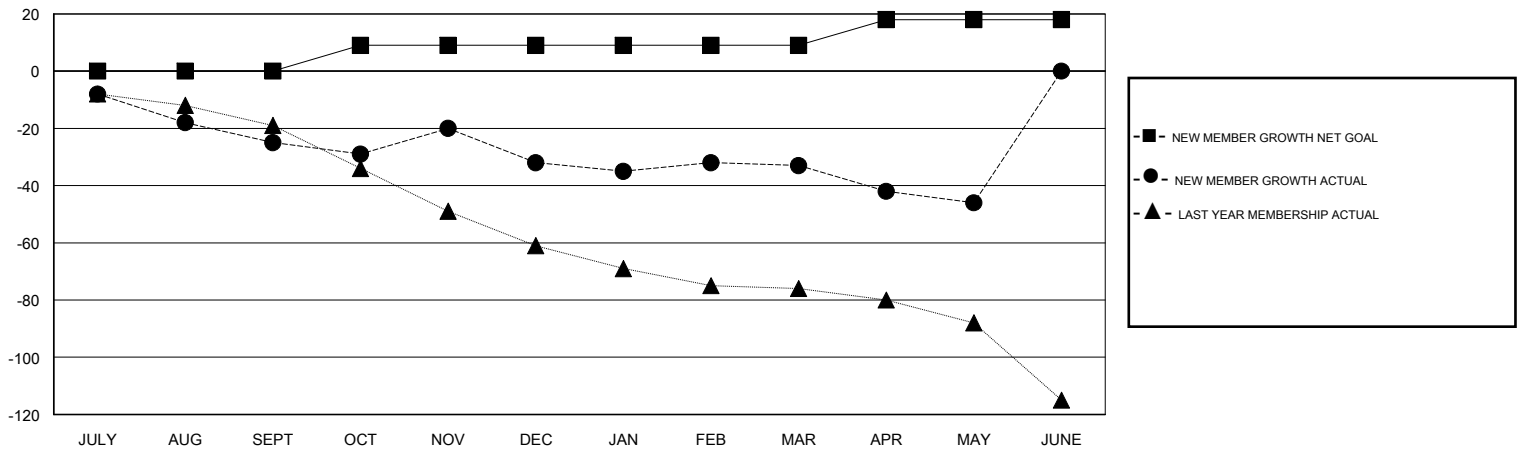
Clubs			
RESULTS FOR 2016-2017			
QUARTER	NEW CLUB GOAL	NEW CLUBS	DROPPED CLUBS
JULY/AUG/SEPT	0	0	0
OCT/NOV/DEC	1	0	1
JAN/FEB/MAR	0	0	0
APR/MAY/JUNE	1	0	0

Members			
RESULTS FOR 2016-2017			
QUARTER	NEW MEMBER GROWTH NET GOAL (not reinstated or transfers)	NEW MEMBER GROWTH ACTUAL (not reinstated or transfers)	DROPPED MEMBERS ACTUAL (including transfers)
JULY/AUG/SEPT	0	13	38
OCT/NOV/DEC	9	23	30
JAN/FEB/MAR	0	17	18
APR/MAY/JUNE	9	6	19

GOALS AND ACTUAL NEW CLUBS CUMULATIVE



GOALS AND ACTUAL MEMBERS CUMULATIVE



DROPPED CLUBS: 1	26 CLUBS OF 59 ADDED 1 OR MORE NEW MEMBERS	GENDER DISTRIBUTION
DROPPED MEMBERS	CLICK HERE FOR CUMULATIVE MEMBERSHIP DATA	MALE 924 (74.10%)
DECEASED 20		FEMALE 323 (25.90%)
CLUB CANCELLED 0		TOTAL FAMILY UNIT MEMBERS 258
OTHER 85		FAMILY MEMBERS PAYING HALF DUES 131
TOTAL 105		